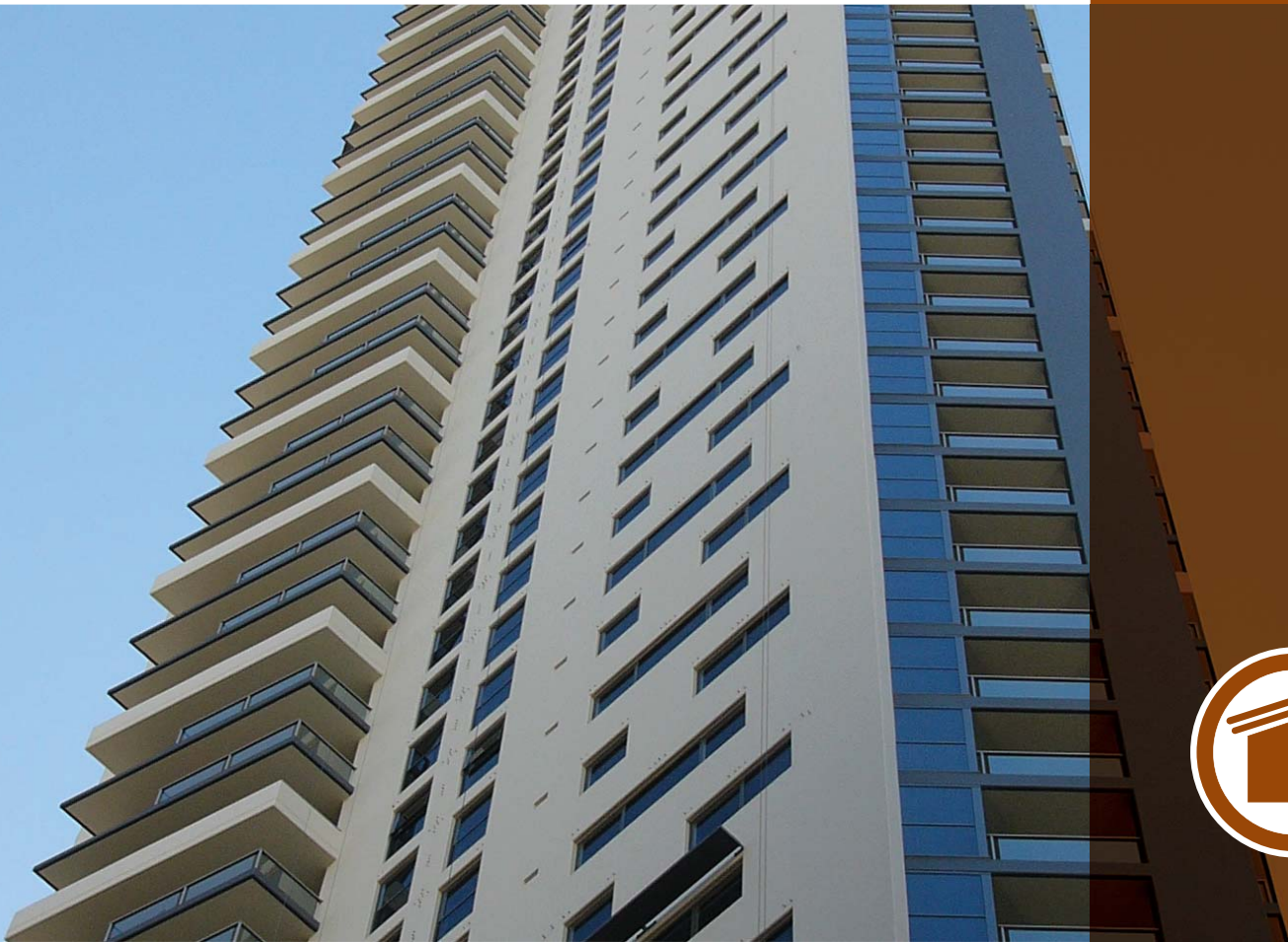


# Exterior Rey Gypsum Board / Exterior Rey Type X Gypsum Board

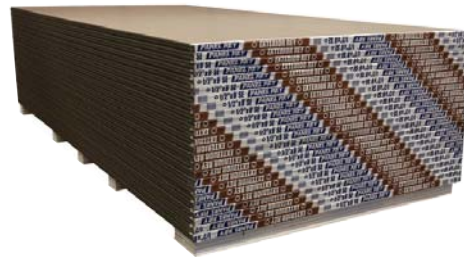


# Gypsum Board Exterior Rey / Exterior Rey X

## Description

Panel Rey's Drywall for Exterior Coating is especially designed to be installed in the external part of the frame of walls or mountings, under other external application materials, such as wood, metal, brick facades, stucco, etc. The Drywall for Exterior Coating is a product with a fireproof core essentially made of gypsum and especially treated to be waterproof, and covered in both sides with 100% recycled paper.

The brown paper, in the front, covers the beveled edges to strengthen and protect the core. The ends are carefully grinded in square cut. Panel Rey products do not contain asbestos.



Gypsum Brand Tag.

## Basic Applications

Panel Rey® Drywall for Exterior Coating is recommended to be used in residential and commercial construction works. It provides additional structural resistance when used with other materials for external use such as wood, metal, brick facades, stucco, etc. This product is designed to be fixed with screws, nails or galvanized staples. Joints are not designed to be finished with a joint compound and paper tape.

1/2" Thick – Recommended for the application of one coat in residential construction.

5/8" Thick – Recommended for those applications looking to reduce permeability and acoustic and thermal transmission.

## Advantages

- Cost-effective: Both, material and installation work is inexpensive.
- Fire Resistant: Its fireproof gypsum core protects the frame elements, even when the external elements on the drywall are flammable.
- Environment protection: Its moisture resistant core and surfaces treated to repel water provide a barrier against wind and water infiltration.
- Easy cut: Due to its nature, it can be marked and cut with precise measures, without using a saw or sophisticated cutting tools.

## Limitations

The front surface of the Drywall for Exterior Coating is not designed to receive the traditional finishing that is applied to standard drywalls, and it is not recommended as a substrate to the direct application of stuccos, paint or texture. Drywalls are not a structural element and must not be used as bases to put a screw or nail on them. We do not recommend installing drywalls to a frame by using only adhesives.

EIFS – Exterior Insulation Finishing System which implies the incorporation of a drywall for exterior coating made by Panel Rey®. The constructor, installer, and/or any person who decides to use the product will be responsible for the EIFS performance and the fulfillment of the recommendations for the proper application method. This product is not recommended to be used in ceilings of places exposed to the exterior, such as garages, porches, etc.

It can be stored for up to a month, but it must be away from the ground and protected from the inclemency of the weather with a protecting cover that prevents its exposure. Sufficient shoe horns must be used to provide the required support and avoid the material to be bulged. Avoid exposure to excessive or continuous moisture, before, during, and after its installation, for example close to pools, saunas or steam rooms. Eliminate moisture sources immediately. A drywall for exterior coating typically has a permeable value of 20 perms (dry cup method), which allows water steam to pass through in both directions.

## Handling and Storage

Drywalls do not generate nor cause the growth of mould and fungi when they are properly transported, stored, handled, installed and preserved. Drywalls must be always dry to prevent the development of microorganisms. It must be stored in an area where it is protected from the inclemency of the weather, even where there is work in process.

When transported, it must be protected with a proper cover that is in good condition. The plastic bags that cover the drywall are designed to protect it during its transportation and must be removed once the product arrives and it is unloaded, otherwise it can caused favorable conditions for the growth of mould and fungi.

Do not store drywall on the ground. Sufficient shoe horns must be used to provide the required support and avoid the material to be bulged. Have especial care to avoid damage in the edges of the product and assure a better installation work. Drywall must be always loaded laid down, never on its edges or ends since it is not a stable position and there would risk of accident.

## Good Installation Practices

Installation: Place drywall with edges in a vertical position on the center of the mounting elements. Place drywall adjusting around all of the openings. Fix drywall with nails or screws, leaving a gap not larger than 4" along the ends and edges; at 8" in the body of the product (at 3" and 6" respectively, if staples are used). If edges are installed horizontally, these must be covered with a moisture resistant barrier or be sealed when are applied. Do not put fasteners closer than 3/8" from the ends and edges.

Nails - Gages not lower than 12, galvanized and a minimum head diameter of 7/16".

Staples - Galvanied at least gage 16, and a crown diameter af at least 7/16" (11 mm).

Screws - Standard specification for the application of drywall (ASTM C-1002). "W" Screws are designed to fasten wood frames and "S" screws to wood or light gage metal frames.

Decoration: Not recommended.

## Applicable Standards

Manufacture: ASTM C-1396 Section 9

Surface Burning Characteristics: ASTM E-84

Installation: ASTM C-1280 (Framing & Control Joints)  
ASTM C-840

Flame spread 0  
Smoke developed 0

## Fire Resistance

The fire resistance performance desired in joint designs is determined by tests made in independent laboratories. These designs are formed by specific materials under a precise configuration. When designs are chosen to meet certain fire resistance standards, make sure each component of the selected design is the one specified in the test and that all material has been assembled pursuant to the requirements.

## Product Data

Dimensiones Nominales						
Thickness	Width	Length*	Edge Type	Thermal Resistance "R"	Type Accord to UL	
1/2" (12.7mm)	4' (1219mm)	8' - 12' (2438mm - 3658mm)	Square	0.45	-	
5/8" (15.9mm)	4' (1219mm)	8' - 12' (2438mm - 3658mm)	Square	0.48	ETX	

\* Special lengths are available under request. Some restrictions apply.

Physical Properties											
Properties	Weight	Flexural Strength (Parallel to fiber)	Flexural Strength (Across to fiber)	Nail Pull Resistance	Core Hardness	Edge Hardness	Nominal Thickness	Length	Core Water Absorption	Surface Water Absorption	End Squareness
UNITS	kg/Pz 4x8 lb/MSF	Lb <sub>f</sub>	Lb <sub>f</sub>	Lb <sub>f</sub>	Lb <sub>f</sub>	Lb <sub>f</sub>	in/1000	in	%	g	in
ASTM 1/2"	N/A	40	110	80	15	15	500 ± 16	Nom ± 0.25	≤10	≤1.6	≤0.13
1/2"	23.7 1630	52	157	82	24	24	493	± 0.01	8.8	1.5	≤0.06
ASTM 5/8"	N/A	50	150	90	15	15	625 ± 16	Nom ± 0.25	≤10	≤1.6	≤0.13
5/8"	32.8 2260	65	204	112	35	28	625	± 0.01	9.5	1.5	≤0.06

Panel Rey® Exterior Rey X Drywall is classified by Underwriters Laboratories, Inc. under the ASTM E-119 and ASTM E-84 standards.

### Fire Resistance Classification Type ETX

Surface Burning Characteristics

Flame Spread 0

Smoke Developed 0

See UL Directory of Products Certified for  
Canada and UL Fire Resistance Directory



For more information contact us:

Customer Service USA  
1 800 862 9022

Phone  
+52 (81) 8345-0055

E-mail  
[contact.us@gpromax.com](mailto:contact.us@gpromax.com)

Web Site  
[www.panelrey.com](http://www.panelrey.com)

Panel Rey S.A.  
Serafin Peña #938 Sur Col. Centro  
Z.C. 64000 Monterrey, N.L.

